

TUBE CARRÉ 2.0

30-Aug.-2018

2.0 LED

LED 2xLED 8W | 220-240VAC | 50-60Hz | COB 3-step | incl. PS | phase-cut dim

CE IP65 0.9m

3000K | >90CRI | 2x380lm

white texture

744264W5

dark grey texture

744264D5

black texture

744264B5

2.0 PAR16

2xPAR16 LED max.10W | GU10 | 100-240VAC | 50-60Hz

CE IP65 0.9m

white texture

744220W0

dark grey texture

744220D0

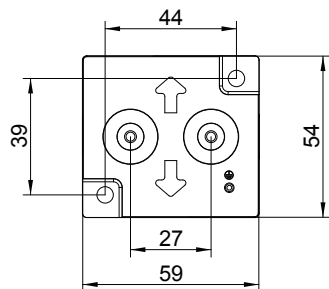
black texture

744220B0

OPTIONAL

for PAR16 LED lamps see our catalogue

backplate:

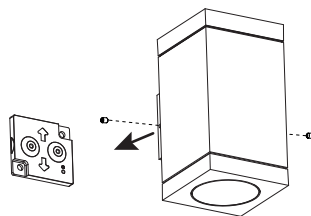


necessary for IP-rating

	A	B	C
use pin to make hole, not a knife			
CABLE			
TYPE	ROUND H05RN-F H07RN8-F H07RN-F	ROUND H05RN-F	ROUND
OUTSIDE Ø	min 6.8mm max 8.9mm	min 5mm max 6.8mm	min 1.5mm max 2.6mm
CONDUCTION SECTION	2or3x 0.75mm ² 2or3x 1.0mm ² 2or3x 1.5mm ²	2or3x 0.75mm ² 2x 1.0mm ²	0.75mm ² 1.5mm ²

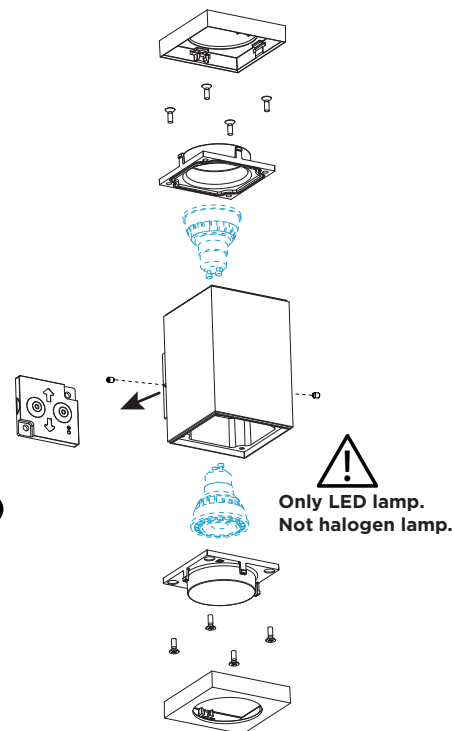
2.0 LED

①
④

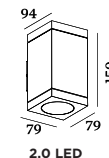


2.0 PAR16

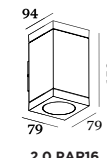
①
④



DIMENSIONS



2.0 LED



2.0 PAR16

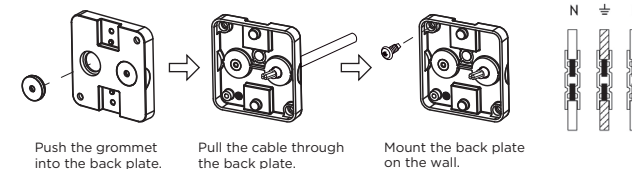
① MOUNTING INSTRUCTION

Remove the backplate and fixate it to the wall with screws.

② POWER CONNECTION

Exterior: WATERPROOF Connection

IP-rated connections for wall fixtures: cable isolation for round cables \varnothing 4.5-7.5 mm, should be in the grommet. For cable use \varnothing 7.0-9.5 mm: replace the grommet with the other grommet in the bag. Refer to overview table.



Push the grommet into the back plate.

Pull the cable through the back plate.

Mount the back plate on the wall.

③ For PAR16 version:

- Pry the body cover to open with a straight screwdriver.
- loosen the four screws of the glass cover and remove it.
- Insert the lamp
- put back the glass cover with the four screws.
- place back the body cover by pushing to click.

④ Mount the luminaire on the backplate with the allen screws.

The light source of the integrated LED is not replaceable; When the light source reaches its end of life the whole luminaire shall be replaced.



Caution, risk of electric shock



WEVER & DUCRÉ
LIGHTING

www.weverducre.com

Wever & Ducre bvba Spinnerijstraat 99/21 8500 Kortrijk

INSTALLATION
INSTRUCTIONS