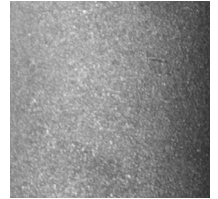


150h Pendant Zinc GP2004-AZ

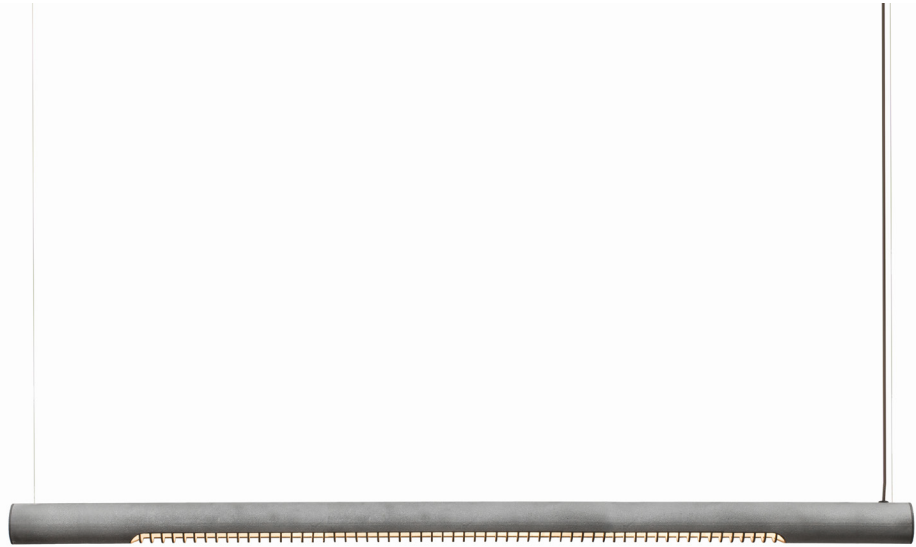
Available colors





Rust



Zinc



	North America	Europe
LED	30W LED, 110-277V, 0-10V dimming	14.4W LED, 230V, Triac dimmable
Color temperature	2700K	2700K
Lumen output	~3000lm	1120lm
Material	Naturally rusted steel	Zinc-coated steel
Size	Ø 2.375, L 59 (in)	Ø 16, L 150 (cm)
Weight	15lbs	6,8kg
Country of origin	The Netherlands	The Netherlands
Certification		

Dry locations only. After the natural oxidation process, all items are treated to stop further rusting.

Designed in The Netherlands.

Custom cords and canopies are available. Contact our offices for more information.