

ALPHA

Design by Ramos & Bassols.

VIBIA
LIGHT IS CREATION

Reference

7940.

Application

Wall Lamps

Installation type

Surface

Description

Wall light designed by Ramos & Bassols with basic lines but great features. Available in matt white lacquer and chrome, matt black lacquer and chrome, matt graphite lacquer and black and matt white lacquer. Its methacrylate diffuser gives a warm, very cosy light. Alpha follows the reader's movements as it rotates and can be angled, opening up to 75° and turning through 360°, which also enables it to provide indirect lighting.

Diffuser

Polycarbonate diffuser

Materials

Diffuser: Polycarbonate

Lid: Zamak

Body: Aluminum

Lid: Aluminum

Finish



7940-03 Matt white lacquer and chrome (RAL 9016)



7940-04 Matt black lacquer and chrome (RAL 9005)

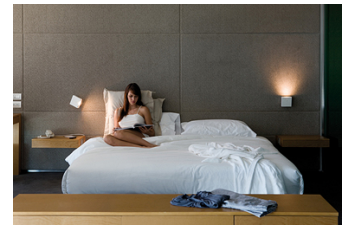
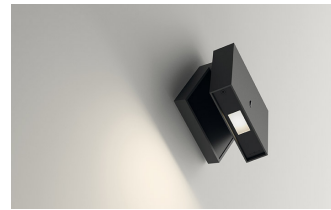
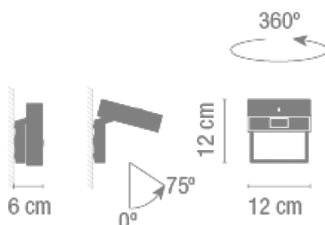


7940-18 Matt graphite lacquer and black (RAL 7016)



7940-93 Matt white lacquer (RAL 9016)

Sketch



Led 2700K CRI >80 199 lm 95 lm/W

Fixture: 31 lm 15 lm/W

Driver included: CC - Constant Current 700 mA 100-240V 50/60Hz

Electronic dimming NO DIM

Physical characteristics

1 Box / 0.13 x 0.20 x 0.21 m. / Vol. 0.0054 m³ /

Gross weight 1.2 kg. / Net weight 1.1 kg.

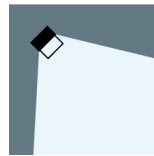
Installation and assembly

Please, see the installation manual

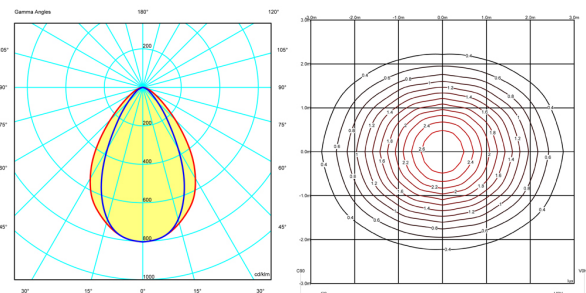
Light distribution

Reading

Lamp having a light beam whose main function is to supply sufficient light for reading.



Photometric data



Certificates



Electrical characteristics

1 x LED2,1W 700mA

Total 2.3 W



