

ABSINTHE

SEP BV
Industriepark 14A - Zone B
2220 Helst-op-den-Berg
BELGIUM

INPUT: 220-240V ~50/60Hz CLASS I Ⓢ
LAMP-HOUSE: LED-2x3W (Max.) 2x1721m
MATERIAL: ALUMINIUM



INSTALLATION INSTRUCTION

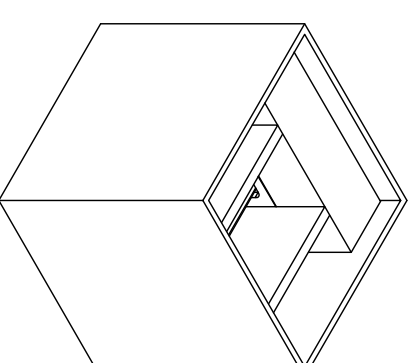
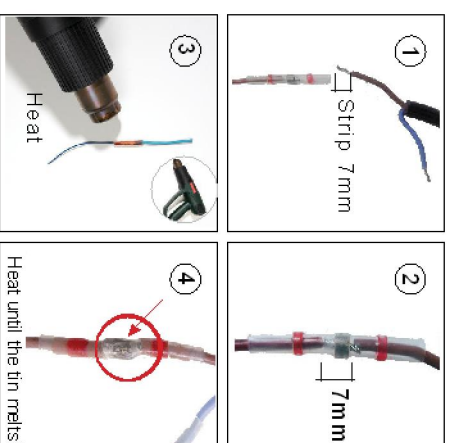
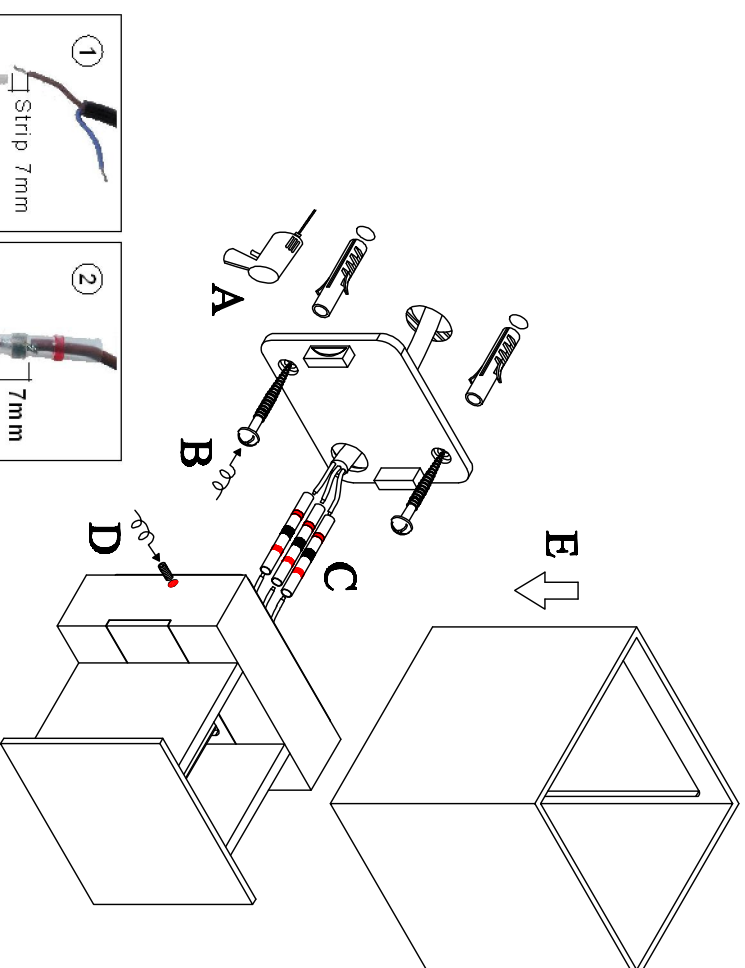
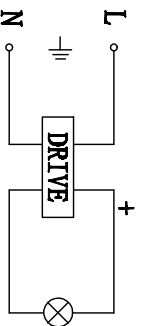
1. Before installing, make sure the power supply is switched off.
2. Follow the steps as the figure for installation or replacement of bulb Step.
 - A. after holing, pull out the wires.
 - B. fix the mounting bracket onto the wall with screws.
 - C. connect the wires by waterproof connectors.
 - D. fix the fixture to the mounting bracket with screws.
 - E. slide the lampshade to the fixture.
3. After finishing every step, tighten the screws, have the fixture fixed, and then connect the power supply.

CLEANING INSTRUCTION

1. Before cleaning, ensure that the power supply is switched off.
2. Use only a soft cloth to clean the lamp, dampened with mild cleanser if needed for resistant dirt.
3. Warning: do not use alcohol or other solvents.

CAUTION:

In case of any doubt, please contact the qualified electrician.



12013-01-WW-3
12013-02-WW-3
12013-04-WW-3