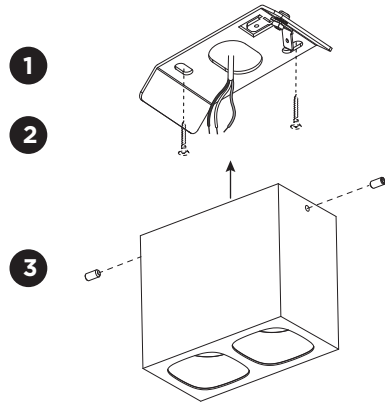


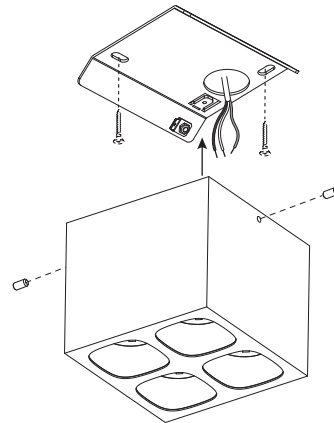
PIRRO SURFACE

INSTALLATION INSTRUCTIONS | SEPTEMBER 2021

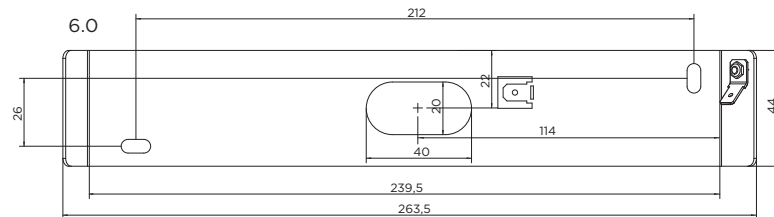
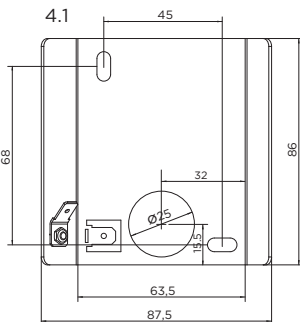
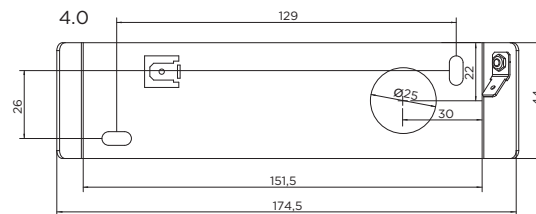
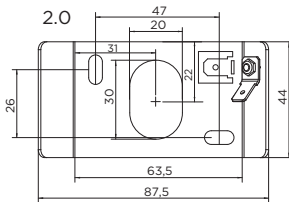
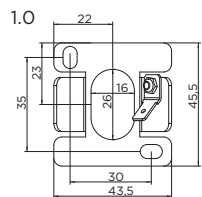
installation for 1.0 / 2.0 / 4.0 / 6.0



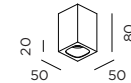
installation for 4.1



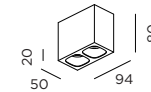
Mounting base:



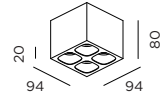
DIMENSIONS



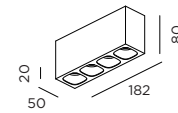
1.0 LED



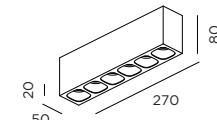
2.0 LED



4.1 LED



4.0 LED



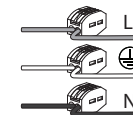
6.0 LED

MOUNTING INSTRUCTION

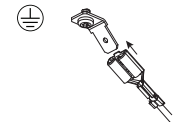
- 1 Remove the mounting base from the luminaire by loosening the socket screws and mount it on the ceiling with screws (screws are not included).

2 POWER CONNECTION

Connect to 220-240V.



Connect the ceiling base earth cable.



- 3 Fixate the luminaire on the base with the socket screw.

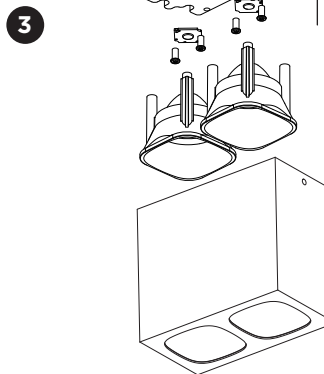
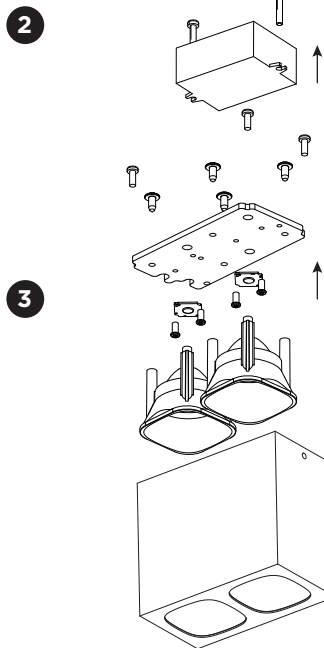
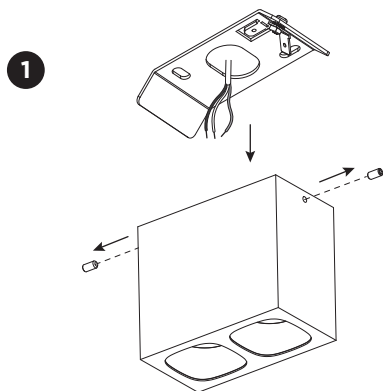


WEVER & DUCRÉ
LIGHTING

WEVER & DUCRÉ BV
Spinnerijstraat 99/21, 8500 Kortrijk, Belgium
weverducre.com

PIRRO SURFACE

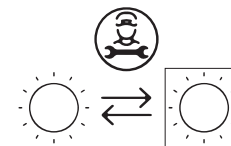
INSTALLATION INSTRUCTIONS | SEPTEMBER 2021



DISMOUNTING INSTRUCTION

light source & driver

- 1 Unscrew the socket screws on the side and pull down the luminaire
- 2 Remove the driver.
- 3 Remove the COB module.
To replace the light source please contact your Wever & Ducré customer service contact point.



This luminaire contains a light source with the energy class E